

# Alternatives to open-Lake disposal in Lake Erie



David Emerman, Ohio EPA

[David.Emerman@EPA.Ohio.gov](mailto:David.Emerman@EPA.Ohio.gov)

(330) 963-1283

# Commercial Harbors

- 8: Federal Commercial Harbors
- \$25B: Business Revenue
- 130,000: Jobs

# Recreation on Lake Erie

- 300: Licensed Marinas
- \$14.1B: Tourism in Lake Erie Counties
- \$1B: Sport Fishing Expenditures
- \$15M: Marine Fuel Taxes
- \$6M: Boating Licenses

# Ohio's Dredging Needs

- 1.5 million cubic yards per year
- 850,000 cubic yards from Toledo Harbor
- Half the dredge material from the Great Lakes
- Majority is dumped in Lake Erie

# Open-Lake Prohibited

**NO  
DUMPING**

**effective 2020**

# Beneficial Use of Dredge Material Project Collaboration



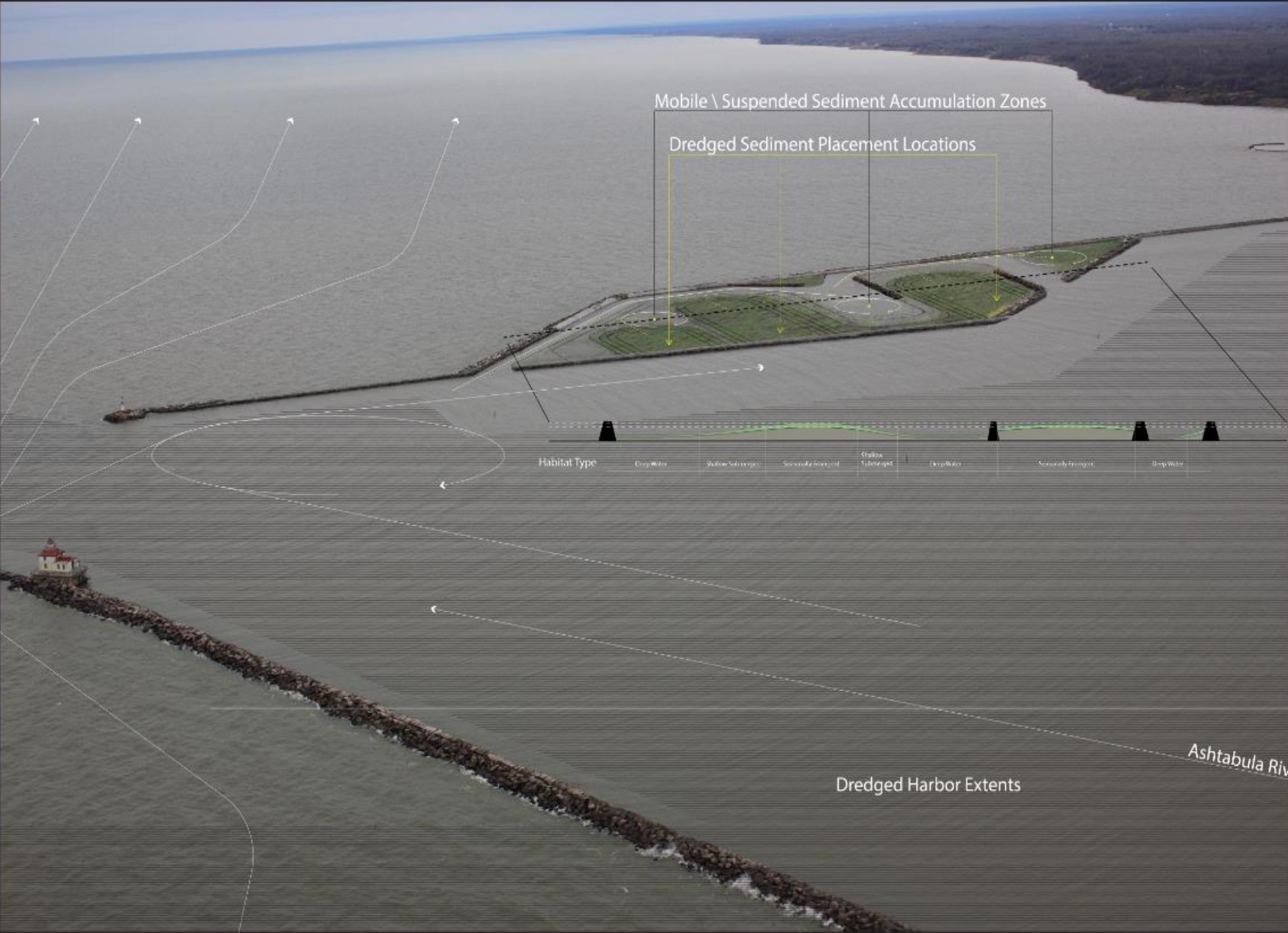
# Alternative to open-Lake disposal: Wetlands Creation Projects





# Alternative to open-Lake disposal: Wetlands Creation Projects







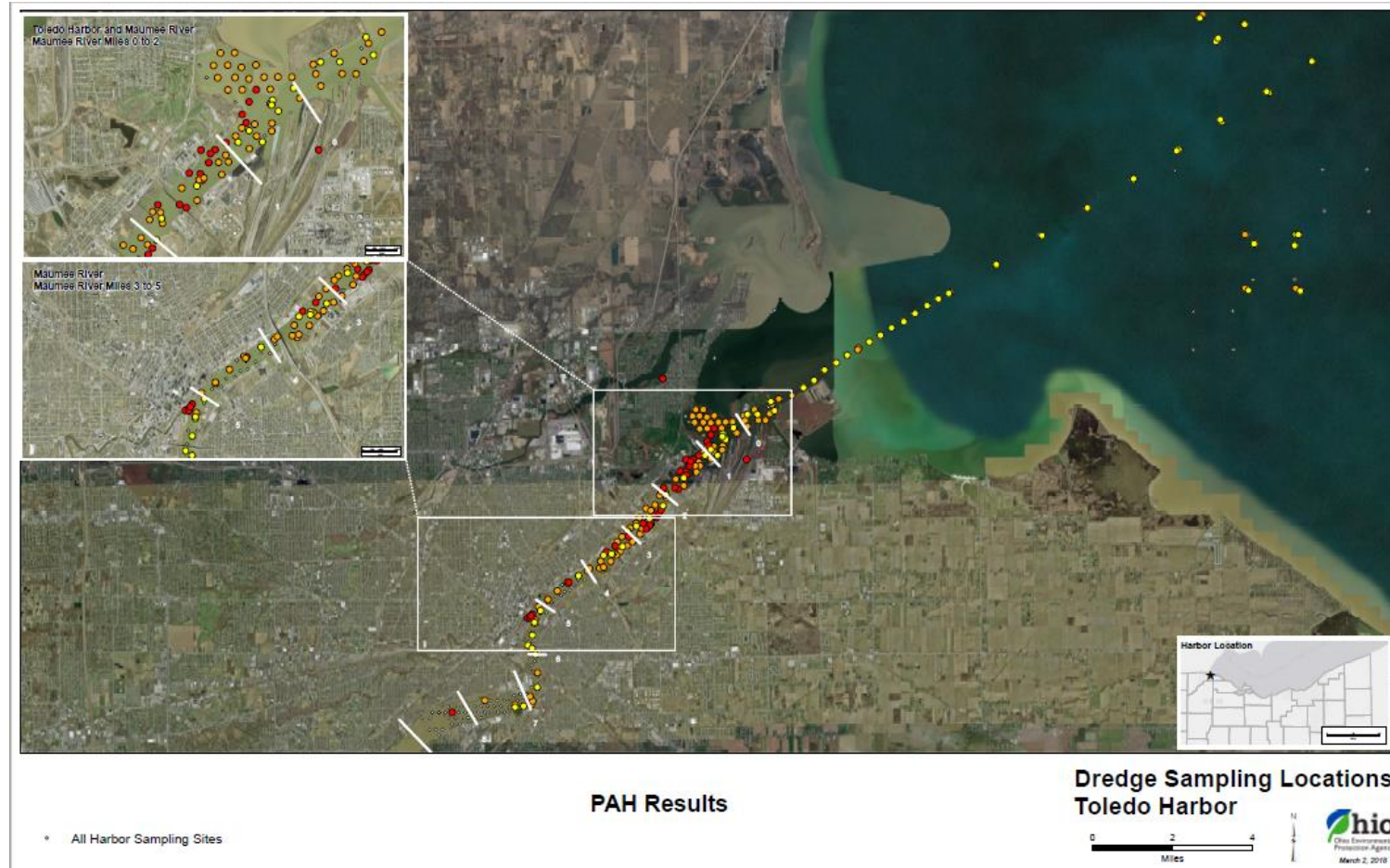
# Alternative to open-Lake disposal: Dredge to Marketable Soil



# New Rules: Its just dirt



# New Rules: Its just dirt





# Marketable Soil





# Alternative to open-Lake disposal: Farm Field Application

## Dredge Material in Agriculture

Be Part  
of the  
Solution



UB  
LAG  
landscape affairs group  
urban | landscape | design | research

### Join the Dredge Research and Innovation in Farming Team

Request for Proposals for Agricultural Use of Dredge Research Studies  
<http://lakeerie.ohio.gov/LakeErieProtectionFund.aspx>

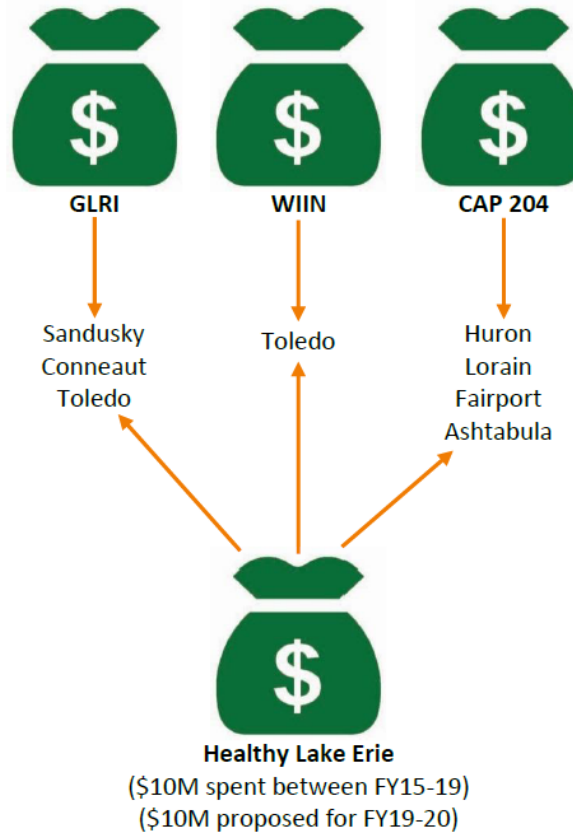


# Alternative to open-Lake disposal: Farm Field Application



# Funding the Projects

## Targeted Federal Funding



## Identified State Funding



# Questions





# Questions



# Questions





# Questions



# Questions





# Questions



# Questions

